

RESOLUTION NO 03-145

RESOLUTION CREATING  
RURAL SPECIAL IMPROVEMENT DISTRICT # 712M  
(CRESTRIDGE ESTATES SUBDIVISION)  
FOR STREET MAINTENANCE

**WHEREAS**, a Petition signed by more that Sixty Percent (60%) of the Freeholders of the proposed district has been submitted to the Board of County Commissioners for creation of a rural improvement district for road maintenance within Yellowstone County, Montana;

**WHEREAS**, the boundaries of the proposed district are the exterior boundaries of the following described real property: (See Schedule A); and,

**WHEREAS**, the anticipated cost for the maintenance, and the breakdown of those costs for benefited properties is attached hereto, marked Schedule "C" and by this reference made a part hereof; and,

**WHEREAS**, the district shall be considered a district to exist perpetually unless included within another district providing the same services or assumed by a municipality; and,

**WHEREAS**, now is the date and time duly notices and published as required by law for the Board of County, Commissioners of Yellowstone County to hear and pass all protests that may be made against the making of said maintenance district; and,

**WHEREAS**, 0 protests have been delivered to the County Clerk since the duly published first notice of the passing of the Resolution of Intention; and,

**WHEREAS**, the Board of County Commissioners has acquired the jurisdiction to order the improvements pursuant to Section 7-12-2113, M.C.A.

**NOW, THEREFORE, BE IT HEREBY RESOLVED**, that the Board of County Commissioners of Yellowstone County, Montana, deeming the public interest or convenience require, and having acquired jurisdiction, hereby creates the following Rural Special Improvement District;

**1. NUMBER OF DISTRICT**

Said Rural Special Improvement District shall be designated as District No #712M.

**2. DESCRIPTION OF DISTRICT**

The district is described by the exterior boundaries of the following described property (See Schedule A.)

**3. DESCRIPTION OF IMPROVEMENTS, DESCRIPTION OF MAINTENANCE, METHOD OF ASSESSMENT, AND ESTIMATED COSTS (See Schedule D)**

**4. DURATION**

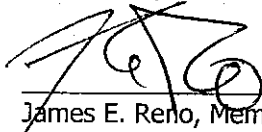
The district shall be deemed to be perpetuated in nature unless absorbed and replaced by another district or municipality.

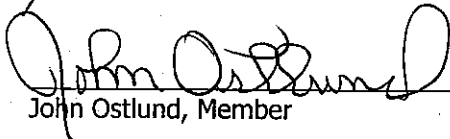
Resolution Creating Rural Special Improvement District  
Page 2

DONE BY ORDER of the Board of County Commissioners, Yellowstone County, Montana  
this 4<sup>th</sup> day of November, 2003

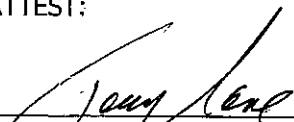
BOARD OF COUNTY COMMISSIONERS  
YELLOWSTONE COUNTY, MONTANA

  
\_\_\_\_\_  
Bill Kennedy, Chairman

  
\_\_\_\_\_  
James E. Reno, Member

  
\_\_\_\_\_  
John Ostlund, Member

(SEAL)  
ATTEST:

  
\_\_\_\_\_  
Tony Nave, Clerk and Recorder  
Yellowstone County, Montana

**Exhibit A**

**PETITION TO ESTABLISH A RURAL SPECIAL IMPROVEMENT DISTRICT (RSID)**

**SECTION B**

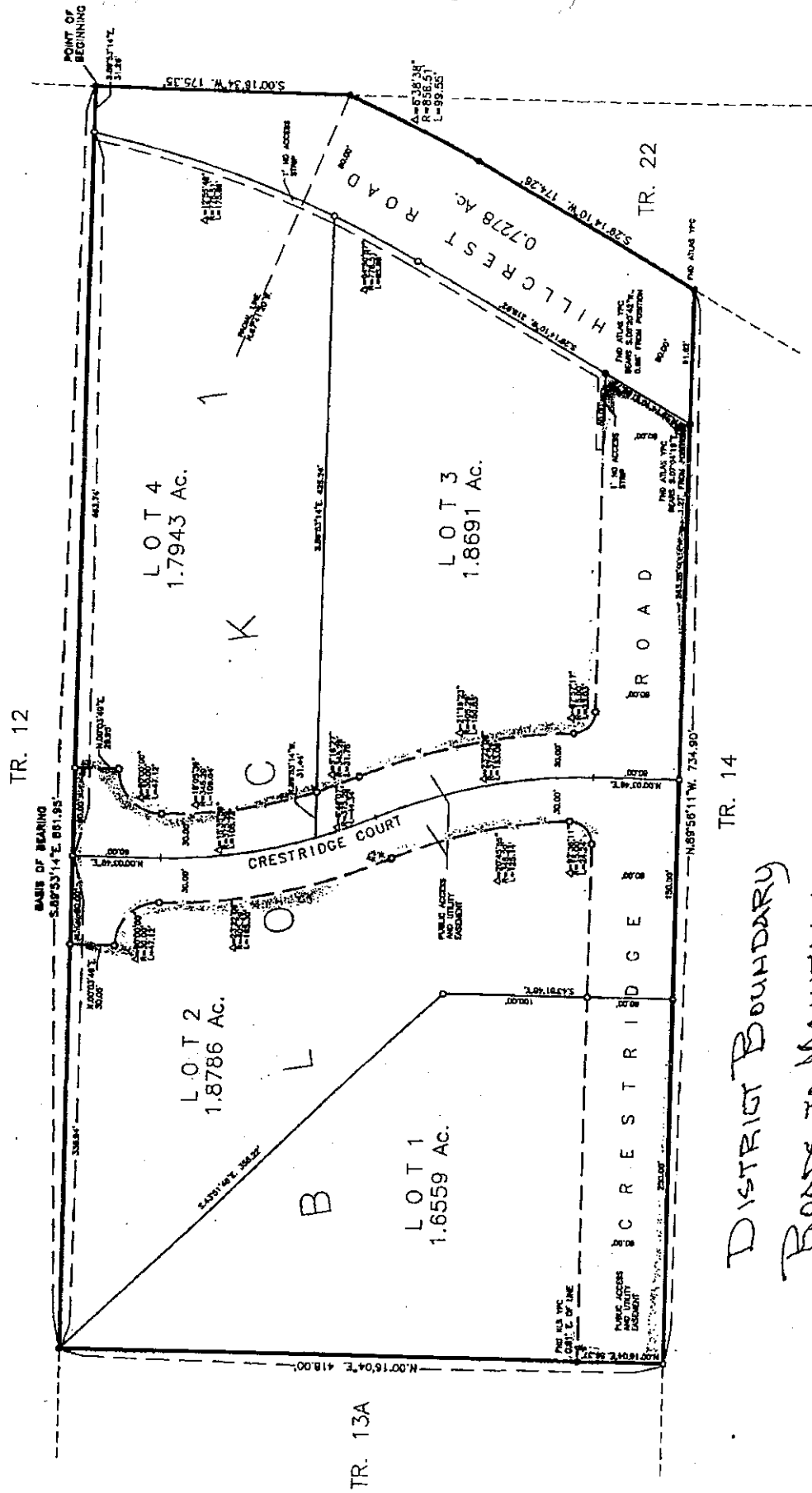
**LEGAL DESCRIPTIONS & OWNERSHIP REPORTS (ATTACHED)**

New Plat of Crestridge Estates

*lots 1, 2, 3, +4 Block 1 Crestridge Estates Subdivision.*

**Exhibit B**

**CRESTRIDGE ESTATES**



*DISTRICT BOUNDARY  
ROADS TO MAINTAIN*

**Exhibit C**

**PETITION TO ESTABLISH A RURAL SPECIAL IMPROVEMENT DISTRICT (RSID)**

**SECTION D**

**METHOD OF ASSESSMENT**

**CHOOSE A METHOD OF ASSESSMENT:**

Equal Amount: \_\_\_\_\_

\_\_\_\_\_ Front Footage: \_\_\_\_\_

\_\_\_\_\_ Other (Describe): \_\_\_\_\_

\_\_\_\_\_ Square Footage (Please list the square footage for each lot within the proposed district):

Property Owner	Lot & Block, Subdivision or C/S	Total Square Footage
Phoenix Land Company of Montana, Inc.	Lots 1, 2, 3 and 4, Block 1, Crestridge Estates	

**PETITION TO ESTABLISH A RURAL SPECIAL IMPROVEMENT DISTRICT (RSID)**

# Exhibit D

## PETITION TO ESTABLISH A RURAL SPECIAL IMPROVEMENT DISTRICT (RSID)

### SECTION C

#### ESTIMATED ANNUAL MAINTENANCE COST

##### FALL MAINTENANCE:

###### ACTIVITY/IMPROVEMENT

###### ESTIMATED COST

Grading 1 hour and 2 hours Mobilization @ \$75.00/hr.	\$ 225.00
	\$

##### WINTER MAINTENANCE:

###### ACTIVITY/IMPROVEMENT

###### ESTIMATED COST

	\$
	\$

##### SPRING MAINTENANCE:

###### ACTIVITY/IMPROVEMENT

###### ESTIMATED COST

Grading 1 hour and 2 hours Mobilization @ \$ 75.00/hr.	\$ 225.00
	\$

##### SUMMER MAINTENANCE:

###### ACTIVITY/IMPROVEMENT

###### ESTIMATED COST

	\$
	\$

TOTAL ESTIMATED ANNUAL MAINTENANCE COST:           \$ 450.00